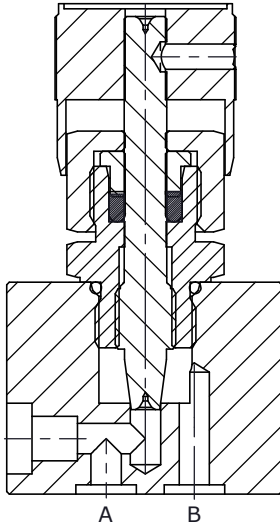




# Needle Valve, Sub Plat Mounting, Model - NV06-S

ISO Valves

## Section



## Description

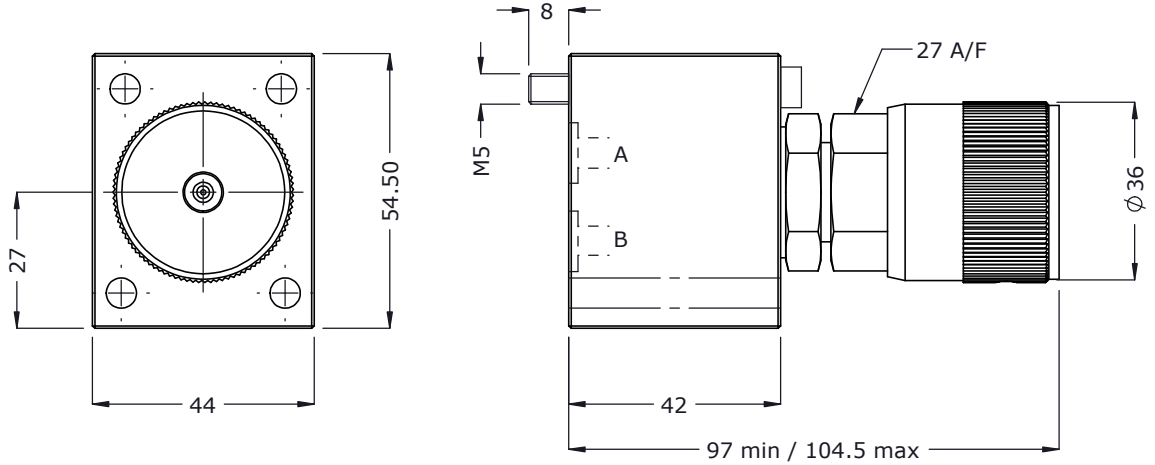
Shut off valves model NVSPM06 are rising spindle, seat type valves with metal to metal seat for leak-free closure between its port 'A' and port 'B'.

The mounting interface conforms to ISO 5781 - AB - 03 - 4 - B.



Hydraulic Symbol

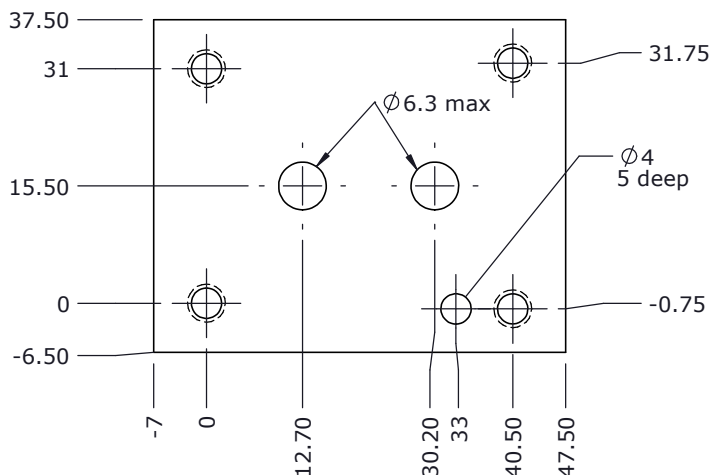
## Unit Dimensions



Note : Valve fixing screws : M5 X 50 L, (10.9) 4 nos.

Tightening torque : 9 Nm

## Interface - as per ISO 5781 - AB - 03 - 4 - B standard



Mounting Surface roughness : 0.8 mm

Mounting Surface flatness : 0.01 mm / 100 mm



## Needle Valve, Sub Plat Mounting, Model - NV06-S

ISO Valves

### Technical Specifications

Construction.....Seat type.  
Mounting type..... Sub-plate mounting type.  
Interface..... ISO 5781 - AB - 03 - 4 - B.  
Mounting position..... Optional  
Flow direction..... From port `A' to port `B'.  
Operating pressure..... 315 bar.  
Hydraulic medium..... Mineral oil.  
Viscosity range..... 10 cSt to 380 cSt.  
Fluid temperature range..... -20 oC to +80 oC.  
Fluid cleanliness requirement..... As per ISO 19/16 or better.  
Mass..... 0.9 kg.

### Ordering Code

