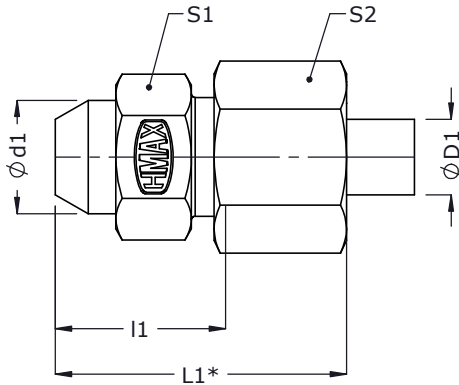




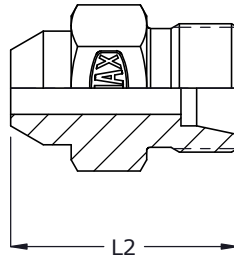
Weld Couplings - WC

ISO fittings

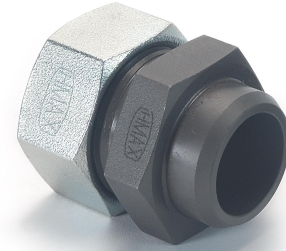
Metric Tube end as per ISO 8434



2D Assembly



2D Body



| Series | Tube od $\phi D1$ | $\phi d1$ | l1 | L1* | L2 | S1 | S2 | Assembly | | Body |
|-----------------------------|-------------------|-----------|------|------|----|----|----|-----------|----------|----------|
| | | | | | | | | Part code | Item no_ | Item no_ |
| Light (L) 250 bar | 6 | 10 | 14.0 | 29.5 | 21 | 12 | 14 | WC06L | 168 | 265 |
| | 8 | 12 | 16.0 | 31.0 | 23 | 14 | 17 | WC08L | 169 | 637 |
| | 10 | 14 | 18.0 | 33.5 | 25 | 17 | 19 | WC10L | 170 | 1276 |
| | 12 | 16 | 18.0 | 33.0 | 25 | 19 | 22 | WC12L | 171 | 1277 |
| | 15 | 19 | 22.0 | 38.0 | 29 | 22 | 27 | WC15L | 172 | 1278 |
| 160 bar | 18 | 22 | 23.5 | 40.5 | 31 | 27 | 32 | WC18L | 173 | 1279 |
| | 22 | 27 | 28.5 | 45.5 | 36 | 32 | 36 | WC22L | 174 | 1280 |
| 100 bar | 28 | 32 | 30.5 | 48.5 | 38 | 41 | 41 | WC28L | 175 | 636 |
| | 35 | 40 | 32.5 | 55.5 | 43 | 46 | 50 | WC35L | 176 | 1281 |
| | 42 | 46 | 35.0 | 58.5 | 46 | 55 | 60 | WC42L | 177 | 1282 |
| Heavy (S) 630 bar | 6 | 11 | 19.0 | 34.5 | 26 | 14 | 17 | WC06S | 178 | 1283 |
| | 8 | 13 | 21.0 | 36.0 | 28 | 17 | 19 | WC08S | 179 | 1284 |
| | 10 | 15 | 22.5 | 39.5 | 30 | 19 | 22 | WC10S | 180 | 1285 |
| | 12 | 17 | 24.5 | 41.0 | 32 | 22 | 24 | WC12S | 181 | 515 |
| 400 bar | 16 | 21 | 26.5 | 45.5 | 35 | 27 | 30 | WC16S | 182 | 509 |
| | 20 | 26 | 29.5 | 52.0 | 40 | 32 | 36 | WC20S | 183 | 913 |
| | 25 | 31 | 32.0 | 57.0 | 44 | 41 | 46 | WC25S | 184 | 511 |
| 250 bar | 30 | 36 | 35.5 | 63.5 | 49 | 46 | 50 | WC30S | 185 | 512 |
| | 38 | 44 | 38.0 | 69.5 | 54 | 55 | 60 | WC38S | 186 | 513 |

* Dimensions given are approx figures with tightened nut.