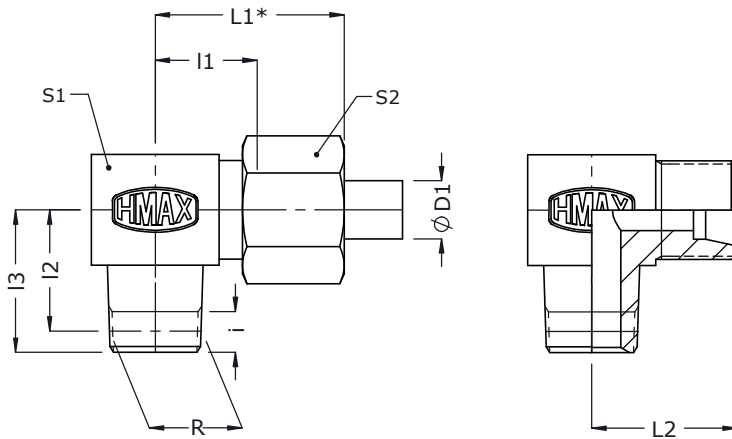




# Male Stud Elbow Couplings - MSE-R (BAR-STOCK)

Metric Tube end as per ISO 8434  
and BSP Taper (R) stud end

ISO fittings



2D Assembly

2D Body

Series	Tube od ØD1	R Male BSPT thread	i	l1	l2 min	l2 max	l3	L1*	L2	S1	S2	Assembly		Body
												Part code	Item no_	Item no_
<b>Light (L) 250 bar</b>	6	R 1/8	7.5	13.0	16.1	17.9	21.0	28.5	20.0	12	14	MSE06LR01-F	384	1810
	8	R 1/4	11.0	15.5	20.2	22.8	27.5	30.5	22.5	14	17	MSE08LR02-F	385	1811
	10	R 1/4	11.0	15.0	19.7	22.3	27.0	30.5	22.0	17	19	MSE10LR02-F	386	1812
	12	R 3/8	11.5	17.0	20.3	22.9	28.0	32.0	24.0	19	22	MSE12LR03-F	387	1813
	15	R 1/2	15.0	22.0	25.0	28.6	35.0	38.0	29.0	22	27	MSE15LR04-F	388	1814
<b>160 bar</b>	18	R 1/2	15.0	23.5	26.0	29.6	36.0	40.5	31.0	27	32	MSE18LR04-F	389	1815
<b>Heavy (S) 630 bar</b>	6	R 1/4	11.0	17.5	18.7	21.3	26.0	33.0	24.5	14	17	MSE06SR02-F	390	1816
	8	R 1/4	11.0	17.0	19.7	22.3	27.0	32.0	24.0	17	19	MSE08SR02-F	391	1817
	10	R 3/8	11.5	17.5	20.3	22.9	28.0	34.5	25.0	19	22	MSE10SR03-F	392	1818
	12	R 3/8	11.5	21.5	20.3	22.9	28.0	38.0	29.0	22	24	MSE12SR03-F	393	1819
<b>400 bar</b>	16	R 1/2	15.0	26.0	23.5	27.1	33.5	45.0	34.5	24	30	MSE16SR04-F	394	1820

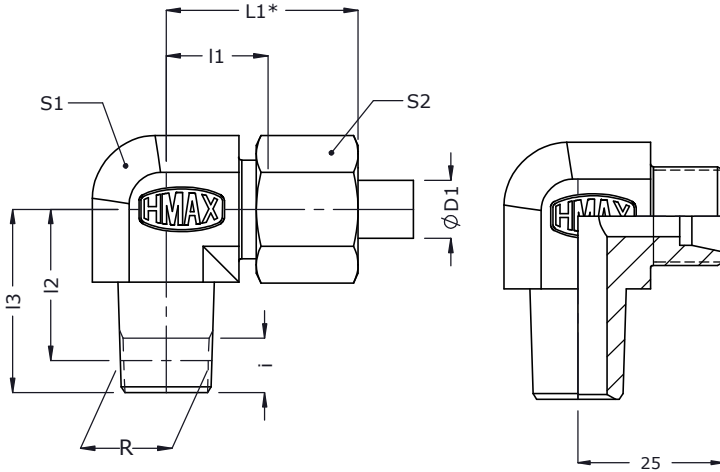
\* Dimensions given are approx figures with tightened nut.



# Male Stud Elbow Couplings - MSE-R (FORGED)

ISO fittings

Metric Tube end as per ISO 8434  
and BSP Taper (R) stud end



2D Assembly

2D Body

Series	Tube od D1	R Male BSPT thread	i	l1	l2 min	l2 max	l3	L1*	L2	S1	S2	Assembly		Body
												Part code	Item no_	Item no_
<b>Light (L) 250 bar</b>	6	R 1/8	7.5	13.0	16.1	17.9	21.0	28.5	20.0	12	14	MSE06LR01	430	1856
	8	R 1/4	11.0	15.5	20.2	22.8	27.5	30.5	22.5	14	17	MSE08LR02	431	348
	10	R 1/4	11.0	15.0	19.7	22.3	27.0	30.5	22.0	17	19	MSE10LR02	432	1857
	12	R 3/8	11.5	17.0	20.3	22.9	28.0	32.0	24.0	19	22	MSE12LR03	433	1858
	15	R 1/2	15.0	22.0	25.0	28.6	35.0	38.0	29.0	22	27	MSE15LR04	434	936
<b>160 bar</b>	18	R 1/2	15.0	23.5	26.0	29.6	36.0	40.5	31.0	27	32	MSE18LR04	435	1859
<b>Heavy (S) 630 bar</b>	6	R 1/4	11.0	17.5	18.7	21.3	26.0	33.0	24.5	14	17	MSE06SR02	436	309
	8	R 1/4	11.0	17.0	19.7	22.3	27.0	32.0	24.0	17	19	MSE08SR02	437	1860
	10	R 3/8	11.5	17.5	20.3	22.9	28.0	34.5	25.0	19	22	MSE10SR03	438	1861
	12	R 3/8	11.5	21.5	20.3	22.9	28.0	38.0	29.0	22	24	MSE12SR03	439	1862
<b>400 bar</b>	16	R 1/2	15.0	26.0	23.5	27.1	33.5	45.0	34.5	24	30	MSE16SR04	440	1863

\* Dimensions given are approx figures with tightened nut.