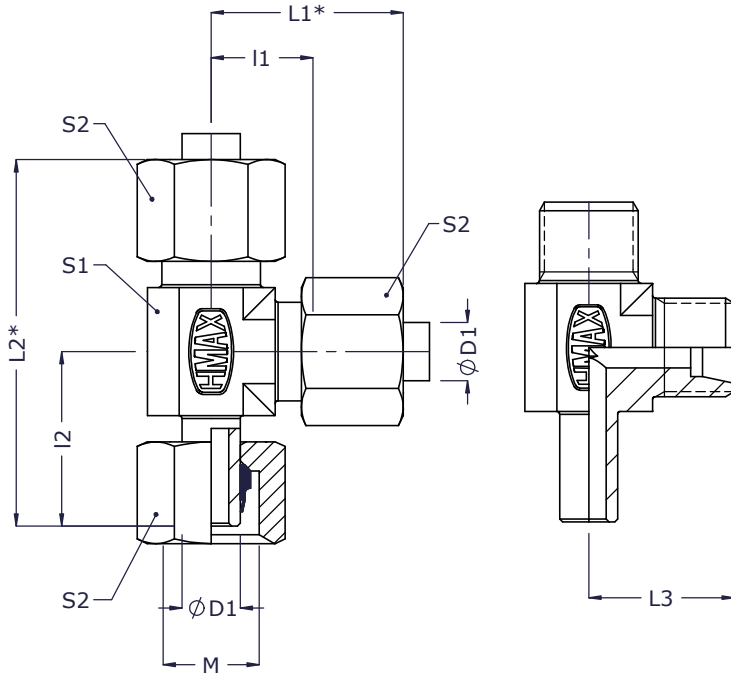




Swivel Run Tee Couplings - SRT (FORGED)

ISO fittings

Metric Tube end as per ISO 8434



2D Assembly

2D Body

Series	Tube od D1	M Metric thread	l1	l2	L1*	L2*	L3	S1	S2	Assembly		Body
										Part code	Item no_	Item no_
Light (L) 250 bar	6	M12x1.5	12.0	26.0	27.5	53.5	19	12	14	SRT6L	874	2140
	8	M14x1.5	14.0	27.5	29.0	56.5	21	14	17	SRT8L	875	2141
	10	M16x1.5	15.0	29.0	30.5	59.5	22	17	19	SRT10L	876	2142
	12	M18x1.5	17.0	29.5	32.0	61.5	24	19	22	SRT12L	877	2143
	15	M22x1.5	21.0	32.5	37.0	69.5	28	22	27	SRT15L	878	2144
160 bar	18	M26x1.5	23.5	35.5	40.5	76.0	31	27	32	SRT18L	879	2145
	22	M30x2.0	27.5	38.5	44.5	83.0	35	30	36	SRT22L	880	2146
100 bar	28	M36x2.0	30.5	43.0	48.5	90.0	38	36	41	SRT28L	881	2147
	35	M45x2.0	34.5	51.0	57.5	108.5	45	46	50	SRT35L	882	2148
	42	M52x2.0	40.0	56.0	63.5	119.5	51	55	60	SRT42L	883	2149
Heavy (S) 630 bar	6	M14x1.5	16.0	27.0	31.5	58.5	23	14	17	SRT6S	884	829
	8	M16x1.5	17.0	27.5	32.0	59.5	24	17	19	SRT8S	885	871
	10	M18x1.5	17.5	30.0	34.5	64.5	25	19	22	SRT10S	886	55
	12	M20x1.5	21.5	31.0	38.0	69.0	29	22	24	SRT12S	887	56
400 bar	16	M24x1.5	24.5	36.5	43.5	80.0	33	24	30	SRT16S	888	828
	20	M30x2.0	26.5	44.5	49.0	93.5	37	30	36	SRT20S	889	2150
	25	M36x2.0	30.0	50.0	55.0	105.0	42	36	46	SRT25S	890	2151
250 bar	30	M42x2.0	35.5	55.0	63.5	118.0	49	46	50	SRT30S	891	901
	38	M52x2.0	41.0	63.0	72.5	135.5	57	55	60	SRT38S	892	2152

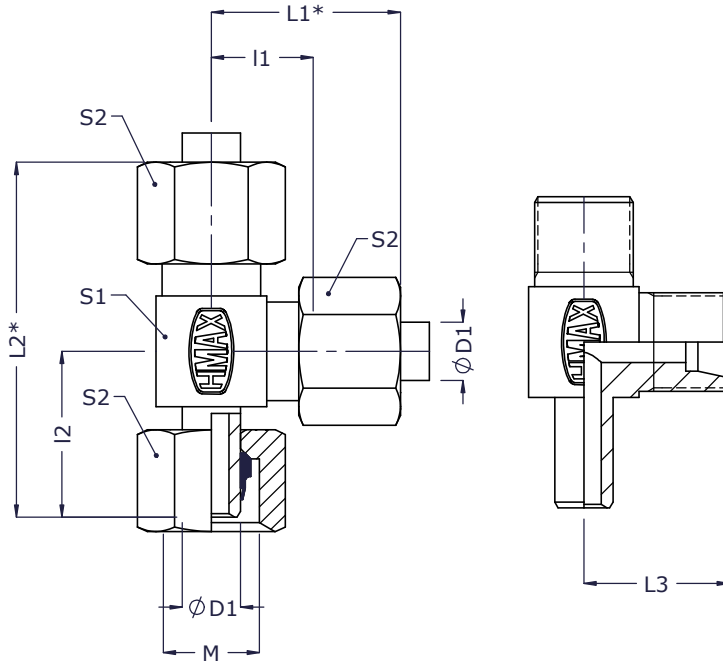
* Dimensions given are approx figures with tightened nut.



Swivel Run Tee Couplings - SRT (BAR - STOCK)

ISO fittings

Metric Tube end as per ISO 8434



2D Assembly

2D Body

Series	Tube od ØD1	M Metric thread	l1	l2	L1*	L2*	L3	S1	S2	Assembly		Body
										Part code	Item no_	Item no_
Light (L) 250 bar	6	M12x1.5	12.0	26.0	27.5	53.5	19	12	14	SRT6L-F	855	2125
	8	M14x1.5	14.0	27.5	29.0	56.5	21	14	17	SRT8L-F	856	2126
	10	M16x1.5	15.0	29.0	30.5	59.5	22	17	19	SRT10L-F	857	2127
	12	M18x1.5	17.0	29.5	32.0	61.5	24	19	22	SRT12L-F	858	2128
	15	M22x1.5	21.0	32.5	37.0	69.5	28	22	27	SRT15L-F	859	2129
160 bar	18	M26x1.5	23.5	35.5	40.5	76.0	31	27	32	SRT18L-F	860	2130
	22	M30x2.0	27.5	38.5	44.5	83.0	35	30	36	SRT22L-F	861	2131
100 bar	28	M36x2.0	30.5	43.0	48.5	90.0	38	36	41	SRT28L-F	862	2132
	35	M45x2.0	34.5	51.0	57.5	108.5	45	46	50	SRT35L-F	863	2133
	42	M52x2.0	40.0	56.0	63.5	119.5	51	55	60	SRT42L-F	864	347
Heavy (S) 630 bar	6	M14x1.5	16.0	27.0	31.5	58.5	23	14	17	SRT6S-F	865	2134
	8	M16x1.5	17.0	27.5	32.0	59.5	24	17	19	SRT8S-F	866	592
	10	M18x1.5	17.5	30.0	34.5	64.5	25	19	22	SRT10S-F	867	589
	12	M20x1.5	21.5	31.0	38.0	69.0	29	22	24	SRT12S-F	868	591
400 bar	16	M24x1.5	24.5	36.5	43.5	80.0	33	24	30	SRT16S-F	869	2135
	20	M30x2.0	26.5	44.5	49.0	93.5	37	30	36	SRT20S-F	870	2136
	25	M36x2.0	30.0	50.0	55.0	105.0	42	36	46	SRT25S-F	871	2137
250 bar	30	M42x2.0	35.5	55.0	63.5	118.0	49	46	50	SRT30S-F	872	2138
	38	M52x2.0	41.0	63.0	72.5	135.5	57	55	60	SRT38S-F	873	2139

* Dimensions given are approx figures with tightened nut.