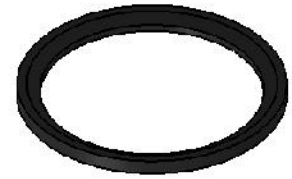
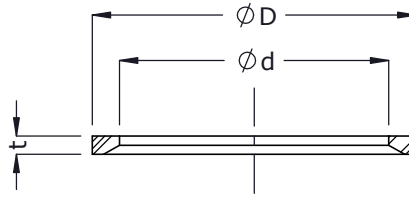




## Seals - S

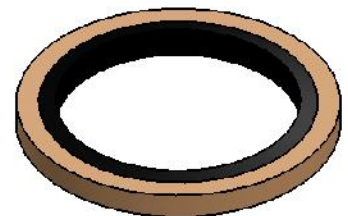
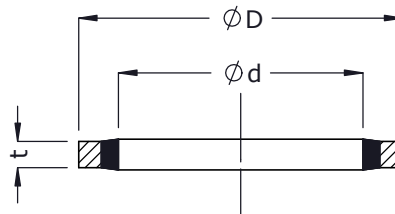
DIN fittings

Elastomeric Seal (DIN 3869)  
Soft sealing for Male stud ends



ød	øD	t	For Male Metric (M) threads	Metric (M)		For Male BSPP (G) threads	BSP (G)	
				Part code	Item no_		Part code	Item no_
8.4	11.9	1.0	M10 x 1.0	ESM10	2155	G 1/8"	ESG01	2570
9.8	14.4	1.5	M12 x 1.5	ESM12	2156	--		
11.6	16.5	1.5	M14 x 1.5	ESM14	2157	G 1/4	ESG02	2571
13.8	18.9	1.5	M16 x 1.5	ESM16	2158	--		
14.7	18.9	1.5	--	ESM17	2159	G 3/8	ESG03	2572
15.7	20.9	1.5	M18 x 1.5	ESM18	2160	--		
17.8	22.9	1.5	M20 x 1.5	ESM20	2161	--		
18.5	23.9	1.5	--	ESM21	2162	G 1/2	ESG04	2573
19.6	24.3	1.5	M22 x 1.5	ESM22	2163	--		
23.9	29.2	1.5	M26 x 1.5	ESM26	2164	G 3/4	ESG06	2574
			M27 x 2.0	ESM27	2165			
29.7	35.7	2.0	M33 x 2.0	ESM33	2166	G 1	ESG08	2575
38.8	45.8	2.0	M42 x 2.0	ESM42	2167	G 1.1/4	ESG10	2576
44.7	50.7	2.0	M48 x 2.0	ESM48	2168	G 1.1/2	ESG12	2577

Bonded Seals  
For BSPP (G) Male stud ends



For Male BSPP (G) threads	ød	øD	t	Part code	Item no_
G 1/8	10.37	15.88	1.80	BSG01	2169
G 1/4	13.74	20.57	1.80	BSG02	2170
G 3/8	17.28	23.80	1.80	BSG03	2171
G 1/2	21.54	28.58	2.30	BSG04	2172
G 3/4	27.05	34.93	2.30	BSG06	2173
G 1	33.89	42.80	2.30	BSG08	2174
G 1.1/4	42.93	52.38	2.85	BSG10	2175
G 1.1/2	48.44	58.60	2.85	BSG12	2176
G 2	60.58	73.03	2.85	BSG16	2177