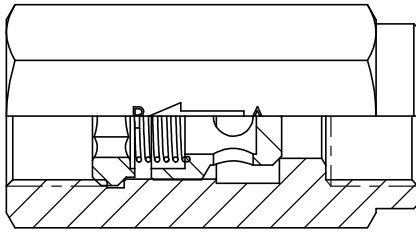




Hydraulic Check Valve (Poppet type)

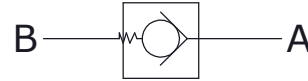
ISO Valves

Section



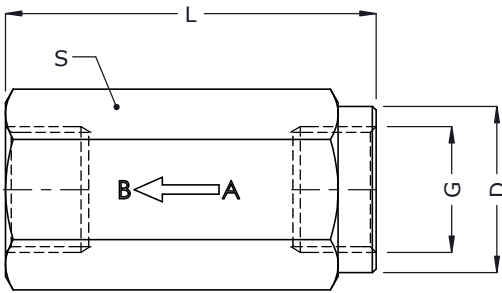
Description

Seat type valves.
Allow free flow Port A to Port B and after leakage free closure in opposite direction.



Hydraulic Symbol

Unit Dimensions



| DN | Part No_ | L/min | PN(bar) | L | D | S | G BSP Thread |
|----|----------|-------|---------|-----|----|----|--------------------|
| 08 | CV-02 | 30 | 500 | 62 | 19 | 19 | 1/4" |
| 10 | CV-03 | 45 | 500 | 68 | 24 | 24 | 3/8" |
| 12 | CV-04 | 70 | 500 | 77 | 30 | 30 | 1/2" |
| 16 | CV-06 | 110 | 400 | 88 | 36 | 36 | 3/4" |
| 20 | CV-08 | 160 | 350 | 105 | 41 | 41 | 1" |
| 25 | CV-10 | 210 | 350 | 130 | 55 | 55 | 1.1/4" |
| 30 | CV-12 | 320 | 350 | 138 | 65 | 65 | 1.1/2" |
| 40 | CV-16 | 460 | 250 | 160 | 80 | 80 | 2" |

Technical Specifications

Construction..... Seat type
 Mounting..... Inline (Thread To Thread Connection)
 Interface..... Factory standard
 Flow direction..... Free flow from A to B Operating
 Hydraulic medium..... Mineral oil
 viscosity range..... 10 °C st to 380 cst.
 Fluid temperature range..... -20°C to +70°C
 Fluid cleanliness requirement As per ISO code 16/13 or better
 Cracking(bursting) pressure available..... 0.5,1.5,3 or 5bar