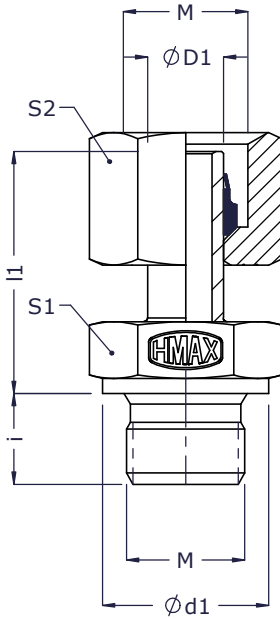




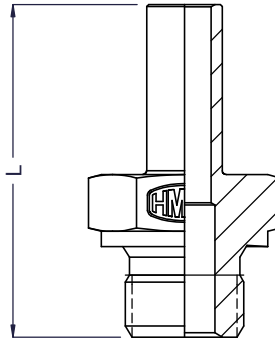
# Straight Stud Standpipes - SPA-M

Metric Standpipes  
Male stud - Metric (M) threads

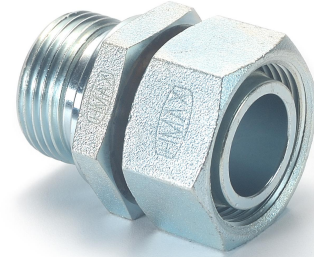
ISO fittings



2D Assembly



2D Body



Series	Tube od ØD1	M Male Metric thread	M Metric thread	Ød1	i	l1	L	S1	S2	Assembly		Body
										Part code	Item no_	Item no_
<b>Light (L) 250 bar</b>	6	M10x1.0	M12x1.5	14	8	24.5	32.5	14	14	SPA6LM10	759	2057
	8	M12x1.5	M14x1.5	18	12	29.5	41.5	19	17	SPA8LM12	760	2058
	10	M14x1.5	M16x1.5	18	12	27.5	39.5	19	19	SPA10LM14	761	2059
	12	M16x1.5	M18x1.5	22	12	34.0	46.0	22	22	SPA12LM16	762	2060
	15	M18x1.5	M22x1.5	26	14	32.0	46.0	27	27	SPA15LM18	763	2061
<b>160 bar</b>	18	M22x1.5	M26x1.5	26	14	31.5	45.5	27	32	SPA18LM22	764	2062
	22	M26x1.5	M30x2.0	32	16	32.5	48.5	32	36	SPA22L26	765	2063
<b>100 bar</b>	28	M33x2.0	M36x2.0	39	18	35.0	53.0	41	41	SPA28LM33	766	2064
	35	M42x2.0	M45x2.0	49	20	42.5	62.5	50	50	SPA35LM42	768	2065
	42	M48x2.0	M52x2.0	55	22	46.5	68.5	55	60	SPA42LM48	769	2066
<b>Heavy (S) 400 bar</b>	6	M12x1.5	M14x1.5	18	12	27.0	39.0	19	17	SPA6SM12	770	2067
	8	M14x1.5	M16x1.5	18	12	29.5	51.5	19	19	SPA8SM14	771	2068
	10	M16x1.5	M18x1.5	22	12	32.0	44.0	22	22	SPA10SM16	772	2069
	12	M18x1.5	M20x1.5	22	12	34.0	46.0	22	24	SPA12SM18	773	2070
<b>400 bar</b>	16	M22x1.5	M24x1.5	26	14	37.0	51.0	27	30	SPA16SM22	774	2071
	20	M27x2.0	M30x2.0	32	16	43.0	59.0	32	36	SPA20SM27	775	2072
	25	M33x2.0	M36x2.0	39	18	48.0	66.0	41	46	SPA25SM33	776	2073
<b>250 bar</b>	30	M42x2.0	M42x2.0	49	20	51.0	71.0	50	50	SPA30SM42	777	2074
	38	M48x2.0	M52x2.0	55	22	60.0	82.0	55	60	SPA38SM48	778	2075

\* Dimensions given are approx figures with tightened nut.