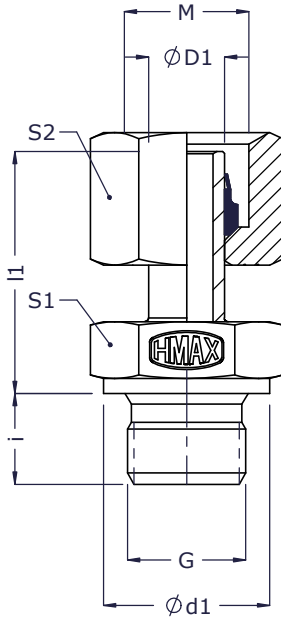




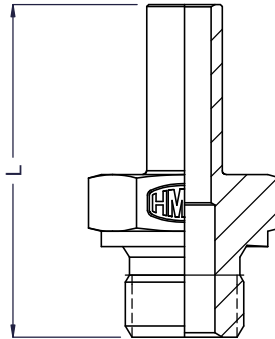
# Straight Stud Standpipes - SPA-G

ISO fittings

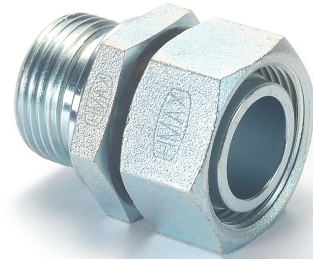
Metric Standpipes  
Male stud - BSPP(G) threads



2D Assembly



2D Body



Series	Tube od ØD1	G Male BSP thread	M Metric thread	Ød1	i	l1	L	S1	S2	Assembly		Body
										Part code	Item no_	Item no_
<b>Light (L) 250 bar</b>	6	G 1/8 A	M12x1.5	14	8	24.5	32.5	14	14	SPA6LG01	740	2038
	8	G 1/4 A	M14x1.5	18	12	29.5	41.5	19	17	SPA8LG02	741	2039
	10	G 1/4 A	M16x1.5	18	12	27.5	39.5	19	19	SPA10LG02	742	2040
	12	G 3/8 A	M18x1.5	22	12	34.0	46.0	22	22	SPA12LG03	743	2041
	15	G 1/2 A	M22x1.5	26	14	32.0	46.0	27	27	SPA15LG04	744	2042
<b>160 bar</b>	18	G 1/2 A	M26x1.5	26	14	31.5	45.5	27	32	SPA18LG04	745	2043
	22	G 3/4 A	M30x2.0	32	16	32.5	48.5	32	36	SPA22LG06	746	2044
<b>100 bar</b>	28	G 1 A	M36x2.0	39	18	35.0	53.0	41	41	SPA28LG08	747	2045
	35	G1 1/4 A	M45x2.0	49	20	42.5	62.5	50	50	SPA35LG10	748	2046
	42	G1 1/2 A	M52x2.0	55	22	46.5	68.5	55	60	SPA42LG12	749	2047
<b>Heavy (S) 400 bar</b>	6	G 1/4 A	M14x1.5	18	12	27.0	39.0	19	17	SPA6SG02	750	2048
	8	G 1/4 A	M16x1.5	18	12	29.5	51.5	19	19	SPA8SG02	751	2049
	10	G 3/8 A	M18x1.5	22	12	32.0	44.0	22	22	SPA10SG03	752	2050
	12	G 3/8 A	M20x1.5	22	12	34.0	46.0	22	24	SPA12SG03	753	2051
<b>400 bar</b>	16	G 1/2 A	M24x1.5	26	14	37.0	51.0	27	30	SPA16SG04	754	2052
	20	G 3/4 A	M30x2.0	32	16	43.0	59.0	32	36	SPA20SG06	755	2053
	25	G 1 A	M36x2.0	39	18	48.0	66.0	41	46	SPA25SG08	756	2054
<b>250 bar</b>	30	G1 1/4 A	M42x2.0	49	20	51.0	71.0	50	50	SPA30SG10	757	2055
	38	G1 1/2 A	M52x2.0	55	22	60.0	82.0	55	60	SPA38SG12	758	2056

\* Dimensions given are approx figures with tightened nut.