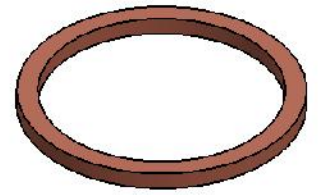
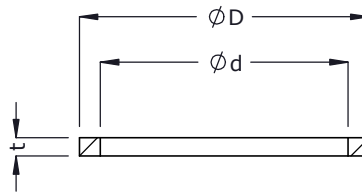




## Seals - S

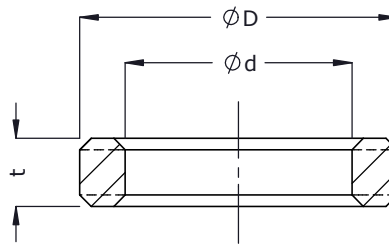
DIN fittings

Copper Washer  
For BSPP (G) Male stud ends



| For Male BSPP (G) treads | $\phi d$ | $\phi D$ | t   | Part code | Item no_ |
|--------------------------|----------|----------|-----|-----------|----------|
| G 1/8                    | 10.2     | 13.9     | 1.0 | CWG01     | 2178     |
| G 1/4                    | 14.2     | 17.9     | 1.5 | CWG02     | 2179     |
| G 3/8                    | 17.2     | 20.9     | 1.5 | CWG03     | 2180     |
| G 1/2                    | 21.2     | 25.9     | 1.5 | CWG04     | 2181     |
| G 3/4                    | 27.3     | 31.9     | 2.0 | CWG06     | 2182     |
| G 1                      | 33.3     | 38.9     | 2.0 | CWG08     | 2183     |
| G 1.1/4                  | 42.3     | 48.9     | 2.0 | CWG10     | 2184     |
| G 1.1/2                  | 48.3     | 54.9     | 2.0 | CWG12     | 2185     |
| G 2                      | 60.5     | 67.8     | 2.5 | CWG16     | 2186     |

Sealing Rings (Metallic)  
For Throttle free Banjo Couplings



| For Male BSPP (G) treads | $\phi d$ | $\phi D$ | t | Part code | Item no_ |
|--------------------------|----------|----------|---|-----------|----------|
| G 1/8                    | 10.0     | 14       | 4 | SRMG01    | 2187     |
| G 1/4                    | 13.4     | 18       | 4 | SRMG02    | 2188     |
| G 3/8                    | 16.9     | 22       | 5 | SRMG03    | 2189     |
| G 1/2                    | 21.3     | 26       | 5 | SRMG04    | 2190     |
| G 3/4                    | 26.8     | 32       | 5 | SRMG06    | 2191     |
| G 1                      | 33.6     | 39       | 6 | SRMG08    | 2192     |
| G 1.1/4                  | 42.3     | 49       | 7 | SRMG10    | 2193     |
| G 1.1/2                  | 48.2     | 55       | 7 | SRMG12    | 2194     |